

BEAMZ OUTDOOR LIGHTING





BBP44 MINI BATTERY UPLIGHT



Light source
4x 4W 4-in-1 LED

LED colours
Red, Green, Blue, White

Illuminance
2100 lx @ 1m

Beam / Field angle
25° / 42°

Flash rate per second
1 - 8Hz

IP rating
IP65

Battery
12.6V - 3.2Ah

Dimensions
100 x 90 x 125mm

Weight
1,10kg

- Up to 25 hours operating time
- Battery-operated wash light
- Waterproof IP65 for outdoor use
- Ref. number **150.586**



BBP54 BATTERY UPLIGHT



Light source
4x 12W 6-in-1 LED

LED colours
Red, Green, Blue, Amber, White, UV

Illuminance
4.238 lx @ 1m

Beam / Field angle
23° / 44°

Flash rate per second
1 - 35Hz

IP rating
IP65

DMX channels
6, 12

DMX connector
Wireless DMX

Battery
12.6V - 7.8Ah

Dimensions
131 x 131 x 163mm

Weight
2,85kg

- Up to 15 hours operating time
- Battery-operated wash light
- OLED display with timer control
- Built-in wireless-DMX receiver
- Ref. number **150.602**



BBP54B REPLACEMENT BATTERY PACK

- Suitable for the BBP54
- Ref. number **150.601**



FCC10 FLIGHTCASE

- With charging function
- Ref. number **150.603**



STARCOLOR72 FLOOD LIGHT



Light source
9x 8W 4-in-1 LED

LED colours
Red, Green, Blue, White

Beam / Field angle
20° / 39°

Illuminance
12.170 lx @ 1m

Flash rate per second
1 - 24Hz

DMX channels
4, 8, 10

DMX connector
3-pin XLR

IP rating
IP65

Cooling
Convection

Power Plug
Power-connector TR

Power supply
100-240VAC 50/60Hz

Dimensions
200 x 110 x 210mm

Weight
2,45kg



- Robust aluminium housing
- 16-bit PWM dimming
- Waterproof IP65 for outdoor use
- Withstands harsh weather conditions
- Ref. number **150.730**



- Robust aluminium housing
- 16-bit PWM dimming
- Waterproof IP65 for outdoor use
- Withstands harsh weather conditions
- Ref. number **150.732**

STARCOLOR128 FLOOD LIGHT



Light source
16x 8W 4-in-1 LED

LED colours
Red, Green, Blue, White

Beam / Field angle
19° / 40°

Illuminance
17.902 lx @ 1m

Flash rate per second
1 - 24Hz

DMX channels
4, 8, 10

DMX connector
3-pin XLR

IP rating
IP65

Cooling
Convection

Power Plug
Power-connector TR

Power supply
100-240VAC 50/60Hz

Dimensions
230 x 240 x 120 mm

Weight
3,40kg

CX20 DATA EXTENSION

- 5m: Ref. number: **150.486**
- 10m: Ref. number: **150.488**



CX21 POWER EXTENSION

- 5m: Ref. number **150.580**
- 10m: Ref. number **150.582**



STARCOLOR240 WALL WASHER

Light source
24x 10W 4-in-1 LED

LED colours
Red, Green, Blue, Amber

Beam / Field angle
28° x 33° / 72° x 75°

Illuminance
7.320 lx @ 1m

Flash rate per second
0 - 20Hz

DMX channels
3, 4, 5, 6, 11

DMX connector
3-pin XLR

IP rating
IP66

Power Plug
Fixed power lead

Power supply
100-240VAC 50/60Hz

Dimensions
200 x 430 x 185mm

Weight
11,30kg

- 240W architectural wall washer
- Waterproof IP66 for outdoor use
- Convection cooling via cooling ribs
- Ref. number **150.690**

STAR COLOR360 WALL WASHER

Light source
24x 15W 5-in-1 LED

LED colours
Red, Green, Blue, Amber, White

Beam / Field angle
28° x 33° / 72° x 75°

Illuminance
9.927 lx @ 1m

Flash rate per second
0 - 20Hz

DMX channels
3, 4, 5, 6, 7, 12

DMX connector
3-pin XLR

IP rating
IP66

Power Plug
Fixed power lead

Power supply
100-240VAC 50/60Hz

Dimensions
200 x 430 x 185mm

Weight
11,30kg

- 360W architectural wall washer
- Waterproof IP66 for outdoor use
- Convection cooling via cooling ribs
- Ref. number **150.692**



STARCOLOR270Z WALL WASHER WITH ZOOM



Light source
4x 100W Single colour LED

LED colours
Warm White

Beam / Field angle
48° / 74°

Illuminance
23.000 lx @ 1m

Wavelength
400-780

Flash rate per second
1 - 23Hz

DMX connector
3-pin XLR

IP rating
IP65

Cooling
Fan

Power supply
100-240VAC 50/60Hz

Dimensions
370 x 390 x 215mm

Weight
12,25kg

- Tempered glass lens
- Waterproof IP65 for outdoor use
- Motorized zoom-function 2°-23°
- Ref. number **150.691**



SB400IP STAGE BLINDER



- Rugged die-cast aluminium exterior
- Waterproof IP65 for outdoor use
- 2-in-1: Stage Blinder and Strobe
- Ref. number **150.454**

Light source
18x 15W 4-in-1 LED

LED colours
Red, Green, Blue, White

LED power: Backlight
42x 0.2W

Beam angle: Min / Max
2° / 23°

Field angle: Min / Max
8° / 46°

Illuminance
28.200 (zoom in)
5.420 (zoom out)

Flash rate per second
0 - 16Hz

DMX channels
3, 4, 5, 16, 22, 34

DMX connector
3-pin XLR

IP rating
IP65

Power Plug
Power-connector

Power supply
100-240VAC 50/60Hz

Dimensions
390 x 140 x 330mm

Weight
9,70kg

LCB1215IP LED BAR



- Die-cast aluminium housing
- Single Pixel Control
- Waterproof IP65 for outdoor use
- Including brackets with Quicklock
- Ref. number **150.721**



Light source
12x 15W 6-in-1 LED

LED colours
Red, Green, Blue, Amber,
White, Lime

Dispersion
21° - 51°

Illuminance
13.000lx @ 1m

Flash rate per second
0 - 20Hz

DMX channels
2, 8, 11, 38, 41, 74, 77

DMX connector
3-pin XLR

IP rating
IP65

Cooling
Fan

Power Plug
Power-connector TR

Power supply
100-240VAC 50/60Hz

Dimensions
1000 x 90 x 205mm

Weight
10,50kg



FCLCB12 FLIGHTCASE



- Designed to fit 4 pieces LCB1215IP
- Ref. number **150.725**



LCB1215IP LENS HOOD

- Light shield to hide the beams
- Ref. number **150.728**



LCB1215IP DIFFUSION FILTER

- For smooth lighting
- 45°: Ref. number **150.726**
- 92°: Ref. number **150.727**



LCB128IP LED BAR



CX23-5 EXTENSION KIT

- 5m power cord/DMX cable
- Ref. number: **150.764**



Light source
12x 8W 4-in-1 LED

LED colours
Red, Green, Blue, Amber

Dispersion
53° - 19°

Illuminance
3.500 lx @ 1m

Flash rate per second
1 - 24Hz

DMX channels
3, 4, 5, 9

DMX connector
3-pin XLR

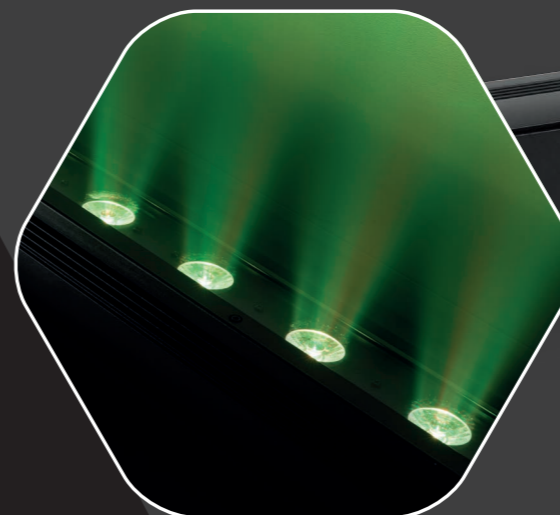
IP rating
IP65

Cooling
Convection

Power supply
100-240VAC 50/60Hz

Dimensions
1000 x 80 x 135mm

Weight
5,80kg



- Control panel with LED display
- Waterproof IP66 for outdoor use
- Electronic dimming
- Ref. number **150.720**



Light source
6x 12W 6-in-1 LED

LED colours
Red, Green, Blue, Amber, White, Ultra Violet

Beam / Field angle
25° / 44°

Illuminance
8,140 lx@1m

DMX channels
6, 12

IP rating
IP65

Cooling
Convection

Display
OLED

Power Plug
Power-connector TR

Battery
16.8V - 7.8Ah

Power supply
100-240VAC 50/60Hz

Dimensions
170 x 230 x 210mm

Weight
3,80kg

- Built-in rechargeable battery
- Up to 20 hours operating time
- Built-in wireless-DMX receiver
- Control panel with OLED display
- Ref. number **150.780**

WDMX

WBP612IP BATTERY LED PAR



FCBP9 FLIGHTCASE



- Designed to fit 6 pieces WBP912IP
- With charging function
- Ref. number **150.783**

WBP912IP BATTERY LED PAR

Light source
9x 12W 6-in-1 LED

LED colours
Red, Green, Blue, Amber,
White, Ultra Violet

Dispersion
17°

Illuminance
7,560 lx@1m

Flash rate per second
1 - 35Hz

DMX channels
6, 12

DMX connector
3-pin XLR

IP rating
IP65

Cooling
Convection

Display
OLED

Power Plug
Power-connector TR

Battery
12.6V - 16Ah

Power supply
100-240VAC 50/60Hz

Dimensions
215 x 280 x 235mm

Weight
5,15kg

FCBP6 FLIGHTCASE



- Designed to fit 6 pieces WBP612IP
- With charging function
- Ref. number **150.781**

- Built-in rechargeable battery
- Up to 20 hours operating time
- Built-in wireless-DMX receiver
- Control panel with OLED display
- Ref. number **150.782**



WDMX



WBP1212IP BATTERY LED PAR

Light source
12x 12W 6-in-1 LED

LED colours
Red, Green, Blue, Amber,
White, Ultra Violet

Dispersion
18°

Illuminance
13.000lx@1m

Flash rate per second
1 - 35Hz

DMX channels
6, 12

DMX connector
3-pin XLR

IP rating
IP65

Cooling
Convection

Display
OLED

Power Plug
Power-connector TR

Battery
12.6V - 19.2Ah

Power supply
100-240VAC 50/60Hz

Dimensions
270 x 140 x 280mm

Weight
5.15kg



- Built-in rechargeable battery
- Up to 20 hours operating time
- Built-in wireless-DMX receiver
- Control panel with OLED display
- Ref. number **150.784**

FCBP6 FLIGHTCASE



- Designed to fit 6 pieces WBP1212IP
- With charging function
- Ref. number **150.785**

Light source
6x 3W 3-in-1 LED

LED colours
Red, Green, Blue

Dispersion
23°

Illuminance
1.300 lx @ 1m

IP rating
IP65

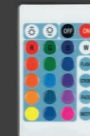
Cooling
Convection

Power Plug
Fixed power lead

Power supply
100-240VAC 50/60Hz

Dimensions
100 x 120 x 140mm

Weight
0.95kg



BWA63 LED PAR

- Pre-programmed shows
- Waterproof IP65 for outdoor use
- Aluminium housing
- Ref. number **150.765**

CX20 DATA EXTENSION

- 5m: Ref. number: **150.486**
- 10m: Ref. number: **150.488**



BWA410 LED PAR



Light source
7x 10W 4-in-1 LED

LED colours
Red, Green, Blue, White

Beam / Field angle
18° / 30°

Illuminance
18.000 lx @ 1m

DMX channels
4, 8

DMX connector
3-pin XLR

IP rating
IP65

Power Plug
Fixed power lead

Power supply
100-240VAC 50/60Hz

Dimensions
170 x 225 x 205mm

Weight
3.30kg

CX21 POWER EXTENSION

- 5m: Ref. number **150.580**
- 10m: Ref. number **150.582**



- Different colour presets
- Waterproof IP65 for outdoor use
- Aluminum housing
- Ref. number **150.758**



BWA418 LED PAR

- Light source**
18x 12W 4-in-1 LED
- LED colours**
Red, Green, Blue, White
- Beam / Field angle**
23° / 40°
- Illuminance**
13.000 lx @ 1m
- DMX channels**
2, 3, 4, 5, 9
- DMX connector**
3-pin XLR
- IP rating**
IP65
- Power Plug**
Fixed power lead
- Power supply**
100-240VAC 50/60Hz
- Dimensions**
265 x 280 x 220mm
- Weight**
5,50kg



- RGBW colour mixing
- Waterproof IP65 for outdoor use
- Aluminum housing
- Ref. number **150.760**

- Light source**
18x 12W 4-in-1 LED
- LED colours**
Red, Green, Blue, White
- Beam / Field angle**
22° / 38°
- Illuminance**
12.000 lx @ 1m
- Flash rate per second**
1 - 20Hz
- DMX channels**
3, 4, 5, 10
- DMX connector**
3-pin XLR
- IP rating**
IP65
- Power Plug**
Power-connector TR
- Power supply**
100-240VAC 50/60Hz
- Dimensions**
310 x 300 x 155mm
- Weight**
5,20kg

BWA536 LED PAR

- Aluminum housing
- Waterproof IP65 for outdoor use
- Display lock via password
- Ref. number **150.790**



CX104 DMX SIGNAL CABLE

- 6m: Ref. number: **177.938**
- 12m: Ref. number: **177.941**



CX23-5 EXTENSION KIT

- 5m power cord/DMX cable
- Ref. number: **150.764**



- Aluminum housing
- Waterproof IP65 for outdoor use
- Power and DMX cable included
- Ref. number **150.763**



BWA412 LED PAR

- Light source**
12x 18W 6-in-1 LED
- LED colours**
Red, Green, Blue, Amber, White, Ultra Violet
- Beam / Field angle**
20° / 41°
- Illuminance**
7.550 lx @ 1m
- DMX channels**
2, 3, 5, 6, 11
- DMX connector**
3-pin XLR
- IP rating**
IP65
- Power Plug**
Fixed power lead
- Power supply**
100-240VAC 50/60Hz
- Dimensions**
270 x 260 x 205mm
- Weight**
4,80kg

BWA534 LED PAR

- Aluminum housing
- Waterproof IP65 for outdoor use
- Display lock via password
- Ref. number **150.792**



- Light source**
12x 15W 6-in-1 LED
- LED colours**
Red, Green, Blue, Amber, White, Ultra Violet
- Beam / Field angle**
22° / 41°
- Illuminance**
11.000 lx @ 1m
- Flash rate per second**
1 - 20Hz
- DMX channels**
3, 5, 6, 12
- DMX connector**
3-pin XLR
- IP rating**
IP65
- Power Plug**
Power-connector TR
- Power supply**
110-250VAC 50/60Hz
- Dimensions**
310 x 300 x 150mm
- Weight**
5,20kg

AC-115 SOFT CASE

- Quality protection for BWA series
- Ref. number: **150.014**

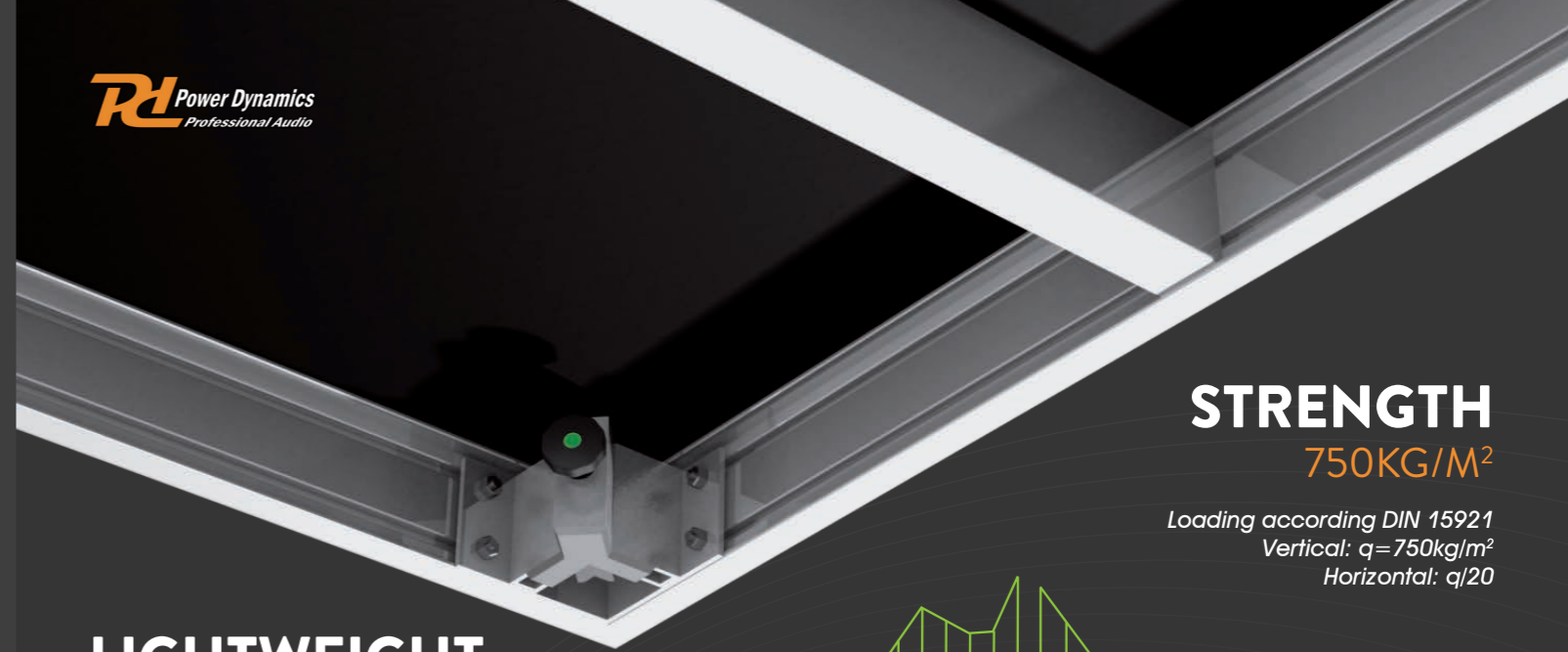


- Aluminum housing
- Waterproof IP65 for outdoor use
- Display lock via password
- Ref. number **150.794**



BWA532 LED PAR

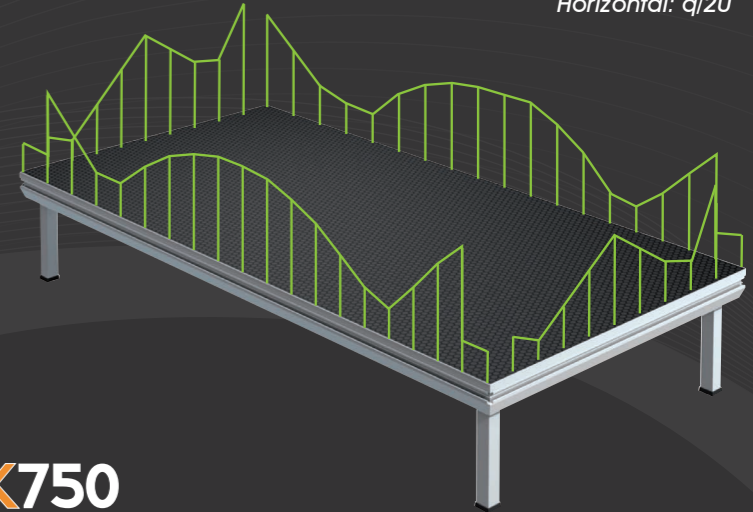
- Light source**
12x 12W 4-in-1 LED
- LED colours**
Red, Green, Blue, White
- Beam / Field angle**
19° / 36°
- Illuminance**
17.000 lx @ 1m
- Flash rate per second**
1 - 20Hz
- DMX channels**
3, 4, 5, 10
- DMX connector**
3-pin XLR
- IP rating**
IP65
- Power Plug**
Power-connector TR
- Power supply**
110-250VAC 50/60Hz
- Dimensions**
310 x 300 x 150mm
- Weight**
5,20kg



STRENGTH 750KG/M²

Loading according DIN 15921
Vertical: $q=750\text{kg/m}^2$
Horizontal: $q/20$

LIGHTWEIGHT ONLY 32KG



DECK750

BWA530 LED PAR

- Light source**
7x 10W 4-in-1 LED
- LED colours**
Red, Green, Blue, White
- Beam / Field angle**
20° / 37°
- Illuminance**
11.500 lx @ 1m
- Flash rate per second**
1 - 20Hz
- DMX channels**
3, 4, 5, 10
- DMX connector**
3-pin XLR
- IP rating**
IP65
- Power Plug**
Power-connector TR
- Power supply**
100-240VAC 50/60Hz
- Dimensions**
270 x 180 x 250mm
- Weight**
4,05kg



AC-115 SOFT CASE

- Quality protection for BWA series
- Ref. number **150.024**



- Aluminum housing
- Waterproof IP65 for outdoor use
- Display lock via password
- Ref. number **150.796**

BEAMZ TRUSS SYSTEMS

BeamZ P30 Truss means strength, durability, stability, lightweight and total flexibility! The P30 truss is constructed of main tubes (51 x 2 mm) and diagonals (20 x 2 mm) and equipped with the P30 conical coupling system what makes it fast and easy to assemble. You can chose between black or aluminium colour. Available in a variety of lengths, corners and accessories you are able to create an almost infinite combination of shapes and designs for your venue. Ideal trussing system for rental, touring and exhibition companies.



PANTHEON, PARIS
12x STARCOLOR360



TRONIOS BV
BEDRIJVENPARK TWENTE NOORD 18
7602 KR ALMELO
THE NETHERLANDS

YOUR **BEAMZ** DEALER

BEAMZLIGHTING.COM